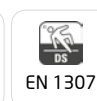


Gauge	1/10
Manufacturing	Cut Pile
Pile description	PA Luxus
Primary backing	Non-woven
Pile weight	510 gr/m <sup>2</sup>
Number of tufts	275.590 /m <sup>2</sup>
Secondary backing	Premiumback
Width	400 cm
Total weight	1404 gr/m <sup>2</sup>
Total height	7,4 mm
Pile In/Out	Out
Roll length	30 m
DOP	1087#01072/15306/H
Fire classification	Bfl-s1
Use classification	31
TOG rating	1

Available colours      Premiumback | 400 cm      152 | 158 | 241 | 314 | 396 | 451 | 456 | 775 | 893 | 996 |

Colour legend	152	Silver	158	Anthracite	241	Bottle Green
	314	Mink	396	Impala	451	Tabasco
	456	Cayenne	775	Canyon	893	Denim
	996	Chocolate				



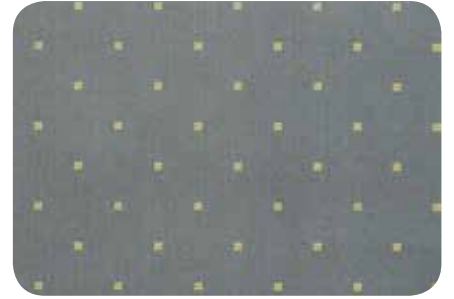
These details are approximate. Complete specification details and associated certificates together with tolerances applying to the above can be provided upon request. We reserve the right to modify technical specifications without prior notice. Due to method of manufacture perfect pattern and/or colour matching can not be guaranteed. In cut-pile carpeting, in rare cases, shading/pile reversal may occur without affecting its fitness for use. Shading/pile reversal can not be considered as a manufacturing or a material defect and will not affect the durability of the carpet.

BIG Floorcoverings nv Rijksweg 442 | 8710 Wielsbeke - Belgium | T +32 (0)56 67 42 11 | F +32 (0)56 67 48 40 | [www.ideal-bintg.com](http://www.ideal-bintg.com)

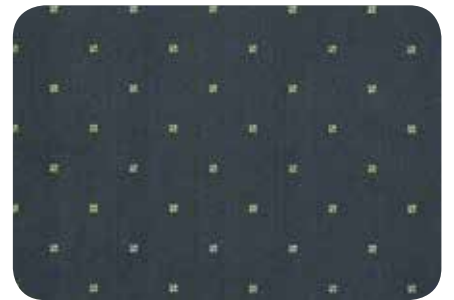
21.08.2018 | ISO N090N02/2/01-01-10



Beaulieu  
International  
Group



152 - 400 cm



158 - 400 cm



241 - 400 cm



314 - 400 cm



396 - 400 cm



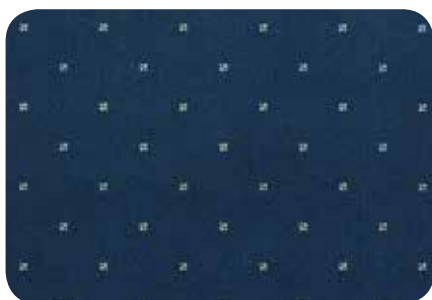
451 - 400 cm



456 - 400 cm



775 - 400 cm



893 - 400 cm



996 - 400 cm