

STUDIO

Technical specifications | Technische Daten | Spécifications techniques

Manufacturing technique Herstellungstechnik Technique de fabrication		1/10 Loop Pile	Total weight Gesamtgewicht Poids total	ISO 8543	1300 gr/m ²
Pile composition Material der Nutzschicht Composition du velours		100% PA	Number of tufts Noppenzahl Nombre de points	ISO 1763	172.000
Secondary backing Rückenausstattung Dossier		Weaveback	Fastness to rubbing (dry) Reibechtheit (trocken) Solidité au frottement (sec)	ISO 105 X12	3-4
Width Breite Largeur		400 cm	Fastness to rubbing (wet) Reibechtheit (nass) Solidité au frottement (humide)	ISO 105 X12	3
Roll length Rollenlänge Longeur du rouleau		25 m	Water fastness Wasserechtheit Solidité à l'eau	ISO 105 E01	4
Pile height Polhöhe Hauteur du velours	ISO 1766	3 mm	Fastness to light Lichtechtheit Solidité à la lumière	ISO 105 B2	5
Pile weight Polgewicht Poids du velours		525 g/m ²	Thermal resistance Wärmedurchlasswiderstand Résistance thermique	ISO 8302	0,13 m ² K/W
Total height Gesamthöhe Hauteur totale	ISO 1765	5 mm	Impact sound insulation Trittschalldämmung Réduction de la transmission du bruit de choc	ISO 140 - 8	21 dB
DOP Nr / DOP n°		1087#01093/15344/WI			



CARUS®

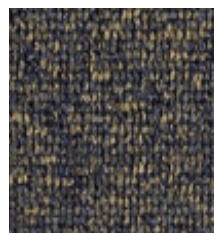
BIG Floorcoverings nv
Rijksweg 442
B-8710 Wielsbeke - Belgium

Showroom
Boffonstraat 3
B-8710 Wielsbeke - Belgium

www.carusflooring.com
carus@bintg.com
T +32 (0)56 67 42 11 - F +32 (0)56 67 48 30

STUDIO

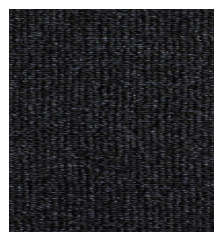
Colours | Farben | Couleurs



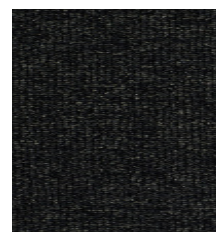
151



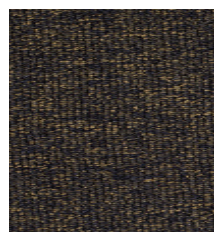
157



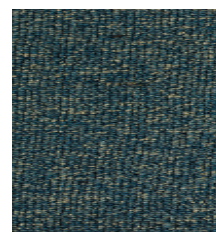
158



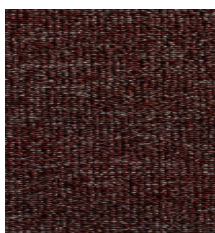
161



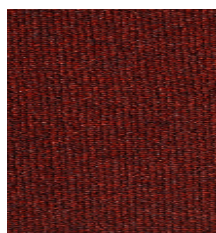
165



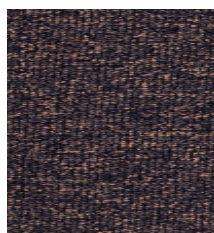
244



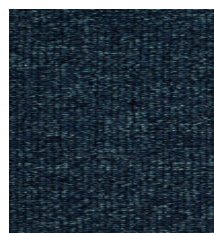
446



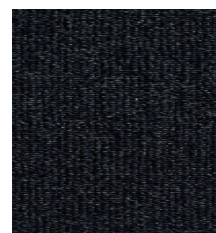
443



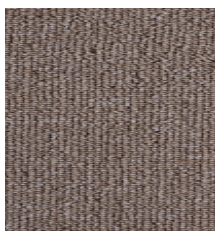
874



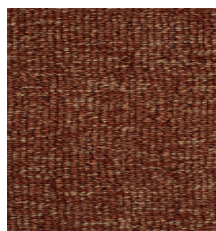
890



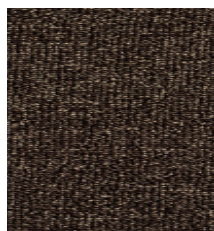
897



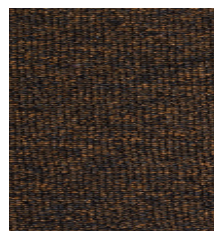
932



956



992



993

CARUS®

BIG Floorcoverings nv
Rijksweg 442
B-8710 Wielsbeke - Belgium

Showroom
Boffonstraat 3
B-8710 Wielsbeke - Belgium

www.carusflooring.com
carus@bintg.com
T +32 (0)56 67 42 11 - F +32 (0)56 67 48 30