

Gauge	1/10
Manufacturing	Cut pile
Pile description	Saphira
Primary backing	Woven
Pile weight	1300 gr/m <sup>2</sup>
Number of tufts	188.976 /m <sup>2</sup>
Secondary backing	Cosyback
Width	400 cm
Total weight	1875 gr/m <sup>2</sup>
Total height	10 mm
Pile In/Out	In
Roll length	30 m
DOP	1087#01013/15242/XI
Fire classification	Cfl-s1
Use classification	32
TOG rating	



Available colours	Cosyback   400 cm	010   139   151   160   162   224   305   307   312   331   334   455   469   471   772   874   880   881   884   989
-------------------	-------------------	---

Colour legend	010	Gold	139	Smoke	151	Mouse
	160	Rustic Grey	162	Shadow	224	Jade
	305	Pearl	307	Ivory	312	Almond
	331	Suede	334	Mushroom	455	Rustic Red
	469	Fire Red	471	Crimson	772	Russet
	874	Plum	880	Atlantic	881	Blue Sky
	884	Aqua	989	Truffle		



These details are approximate. Complete specification details and associated certificates together with tolerances applying to the above can be provided upon request. We reserve the right to modify technical specifications without prior notice. Due to method of manufacture perfect pattern and/or colour matching can not be guaranteed. In cut-pile carpeting, in rare cases, shading/pile reversal may occur without affecting its fitness for use. Shading/pile reversal can not be considered as a manufacturing or a material defect and will not affect the durability of the carpet.

BIG Floorcoverings nv Rijksweg 442 | 8710 Wielsbeke - Belgium | T +32 (0)56 67 42 11 | F +32 (0)56 67 48 40 | [www.ideal-bintg.com](http://www.ideal-bintg.com)

01.10.2018 | ISO N090N02/2/01-01-10



Beaulieu  
International  
Group



010 - 400 cm



139 - 400 cm



151 - 400 cm



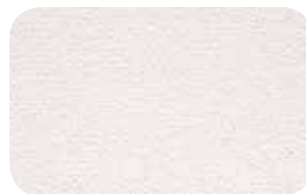
160 - 400 cm



162 - 400 cm



224 - 400 cm



305 - 400 cm



307 - 400 cm



312 - 400 cm



331 - 400 cm



334 - 400 cm



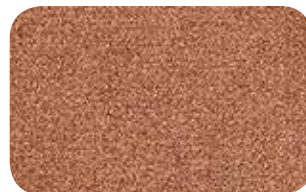
455 - 400 cm



469 - 400 cm



471 - 400 cm



772 - 400 cm



874 - 400 cm



880 - 400 cm



881 - 400 cm



884 - 400 cm



989 - 400 cm