

Gauge	1/8	
Manufacturing	Cut pile	
Pile description	Saphira	
Primary backing	Woven	
Pile weight	1615 gr/m ²	
Number of tufts	176.500 /m ²	
Secondary backing	Cosyback	
Width	400 cm	500 cm
Total weight	2479 gr/m ²	2479 gr/m ²
Total height	15,5 mm	15,5 mm
Pile In/Out	In	In
Roll length	25 m	25 m
DOP	1087#00372/15288/XI	
Fire classification	Cfl-s1	
Use classification	23/31	
TOG rating	1,25	



Available colours Cosyback | 400/500 cm 131 | 139 | 152 | 153 | 302 | 305 | 320 | 332 | 333 | 405 | 449 | 451 | 772 | 847 | 876 | 893 | 897 | 995 |

Colour legend	131	Castlerock	139	Phantom	152	Silver
	153	Dark Grey	302	Chalk White	305	Pearl
	320	Barley	332	Harvest	333	Pecan
	405	Ashes of Roses	449	Coral	451	Tabasco
	772	Russet	847	Aubergine	876	Stormy Sea
	893	Denim	897	Midnight Blue	995	Coconut



These details are approximate. Complete specification details and associated certificates together with tolerances applying to the above can be provided upon request. We reserve the right to modify technical specifications without prior notice. Due to method of manufacture perfect pattern and/or colour matching can not be guaranteed. In cut-pile carpeting, in rare cases, shading/pile reversal may occur without affecting its fitness for use. Shading/pile reversal can not be considered as a manufacturing or a material defect and will not affect the durability of the carpet.

BIG Floorcoverings nv Rijksweg 442 | 8710 Wielsbeke - Belgium | T +32 (0)56 67 42 11 | F +32 (0)56 67 48 40 | www.ideal-bintg.com

4.12.2018 | ISO N090N02/2/01-01-10



Beaulieu
International
Group



131 - 400/500 cm



139 - 400/500 cm



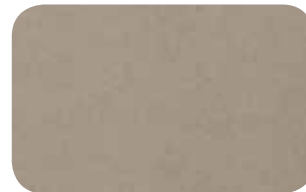
152 - 400/500 cm



153 - 400/500 cm



302 - 400/500 cm



305 - 400/500 cm



320 - 400/500 cm



332 - 400/500 cm



333 - 400/500 cm



405 - 400/500 cm



449 - 400/500 cm



451 - 400/500 cm



772 - 400/500 cm



847 - 400/500 cm



876 - 400/500 cm



893 - 400/500 cm



897 - 400/500 cm



995 - 400/500 cm