

Gauge	1/10	
Manufacturing	Cut pile	
Pile description	Velluto	
Primary backing	Woven	
Pile weight	1260 gr/m <sup>2</sup>	
Number of tufts	248.031 /m <sup>2</sup>	
Secondary backing	Cosyback	
Width	400 cm	500 cm
Total weight	2070 gr /m <sup>2</sup>	2070 gr /m <sup>2</sup>
Total height	11,7 mm	11,7 mm
Pile In/Out	In	In
Roll length	25 m	25 m
DOP	1087#215012/DIV/XI	
Fire classification	Efl	
Use classification	22	
TOG rating	1,5	



Available colours      Cosyback | 400/500 cm    109 | 110 | 152 | 310 | 314 | 331 | 334 | 396 | 454 | 854 | 874

Colour legend	109	Steel	110	Moonlit	152	Silver
	310	Marzipan	314	Mink	331	Suede
	334	Mushroom	396	Impala	454	Mellow Rose
	854	Lilac	874	Plum		



These details are approximate. Complete specification details and associated certificates together with tolerances applying to the above can be provided upon request. We reserve the right to modify technical specifications without prior notice. Due to method of manufacture perfect pattern and/or colour matching can not be guaranteed. In cut-pile carpeting, in rare cases, shading/pile reversal may occur without affecting its fitness for use. Shading/pile reversal can not be considered as a manufacturing or a material defect and will not affect the durability of the carpet.

BIG Floorcoverings nv Rijksweg 442 | 8710 Wielsbeke - Belgium | T +32 (0)56 67 42 11 | F +32 (0)56 67 48 40 | [www.ideal-bintg.com](http://www.ideal-bintg.com)

04.09.2018 | ISO N090N02/2/01-01-10



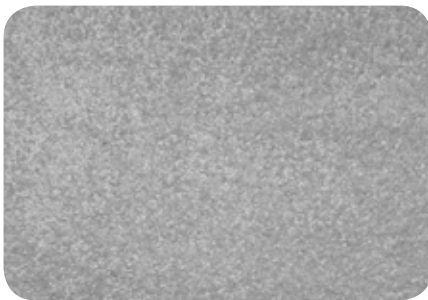
Beaulieu  
International  
Group



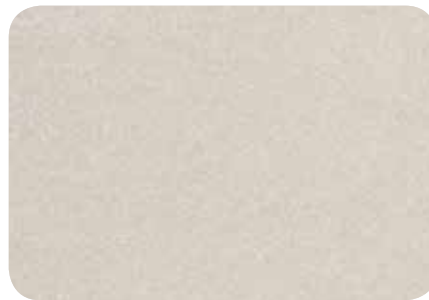
109 - 400/500 cm



110 - 400/500 cm



152 - 400/500 cm



310 - 400/500 cm



314 - 400/500 cm



331 - 400/500 cm



334 - 400/500 cm



396 - 400/500 cm



454 - 400/500 cm



854 - 400/500 cm



874 - 400/500 cm