

Gauge	1/8
Manufacturing	Cut Pile
Pile description	Saphira
Primary backing	Woven
Pile weight	2050 gr/m ²
Number of tufts	176.377 /m ²
Secondary backing	Cosyback
Width	400 cm
Total weight	2550 gr/m ²
Total height	12,5 mm
Pile In/Out	In
Roll length	20 m
DOP	1087#01035/15262/XI
Fire classification	Cfl-s1
Use classification	23/31
TOG rating	1,15



Available colours	Cosyback 400 cm	108 110 139 156 159 167 244 304 315 317 334 337 408 876 932 994
-------------------	-------------------	---

Colour legend	108 Apollo	110 Moonlit	139 Phantom
	156 Dolphin	159 Ebony	167 Shark
	244 Balsem Green	304 White Swan	315 Pepper
	317 Natural	334 Mushroom	337 Desert
	408 Hazy Earth	876 Stormy Sea	932 Taupe
	994 Beach		



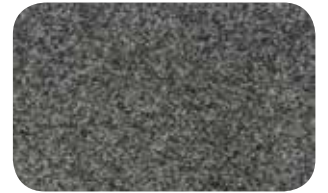
These details are approximate. Complete specification details and associated certificates together with tolerances applying to the above can be provided upon request. We reserve the right to modify technical specifications without prior notice. Due to method of manufacture perfect pattern and/or colour matching can not be guaranteed. In cut-pile carpeting, in rare cases, shading/pile reversal may occur without affecting its fitness for use. Shading/pile reversal can not be considered as a manufacturing or a material defect and will not affect the durability of the carpet.

BIG Floorcoverings nv Rijksweg 442 | 8710 Wielsbeke - Belgium | T +32 (0)56 67 42 11 | F +32 (0)56 67 48 40 | www.ideal-bintg.com

07.11.2018 | ISO N090N02/2/01-01-10



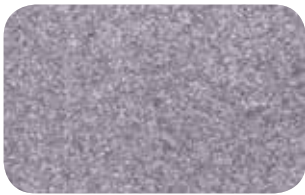
108 - 400 cm



110 - 400 cm



139 - 400 cm



156 - 400 cm



159 - 400 cm



167 - 400 cm



244 - 400 cm



304 - 400 cm



315 - 400 cm



317 - 400 cm



334 - 400 cm



337 - 400 cm



408 - 400 cm



876 - 400 cm



932 - 400 cm



994 - 400 cm