



Beaulieu
International
Group

Needle Felt

ISO 9001: 2015 CERTIFIED
ISO 14001: 2015 CERTIFIED

COLLECTION ATLAS



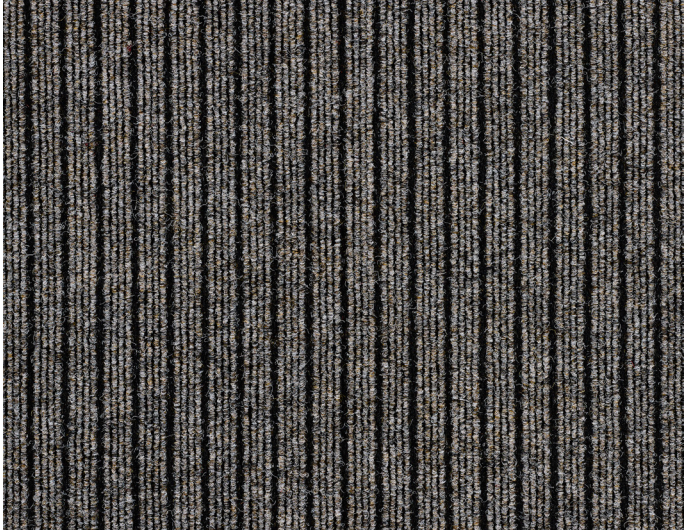
| | | | | |
|----------------|---------------------|------------------------|----------|------------------------------|
| Pile content | Polmaterial | Composition des fibres | - | 100% synthetic |
| Surface aspect | Oberflächenstruktur | Aspect du surface | - | Rib |
| Backing | Rücken | Dossier | ISO 2424 | Gel |
| Pile weight | Polgewicht | Poids des fibres | ISO 8543 | 790 gr/m² |
| Total weight | Gesamtgewicht | Poids total | ISO 8543 | 1375 gr/m² |
| Pile height | Polhöhe | Hauteur du velours | ISO 1765 | 4 mm |
| Total height | Gesamthöhe | Hauteur totale | ISO 1765 | 7 mm |
| Roll length | Länge | Longueur | - | 25 m |

CONTACT

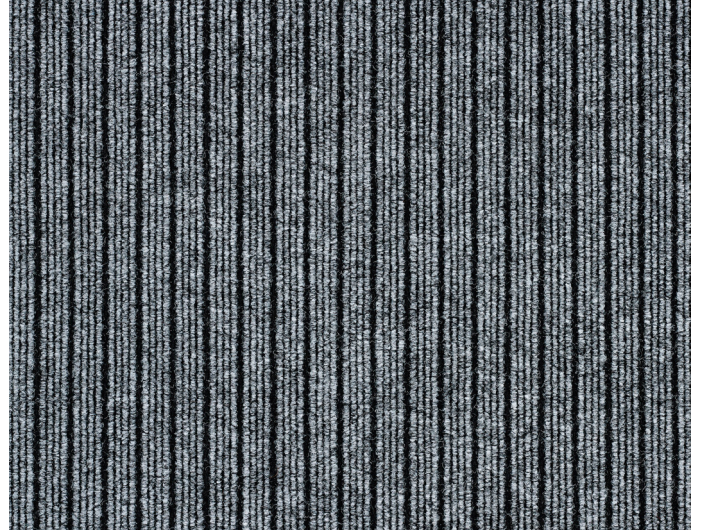
Sales.BFSEurope@bintg.com
www.beaulieu-needlefelt.com

We reserve the right to alter technical specifications. Protection foil is not suitable in humid conditions.
© Beaulieu International Group

ATLAS



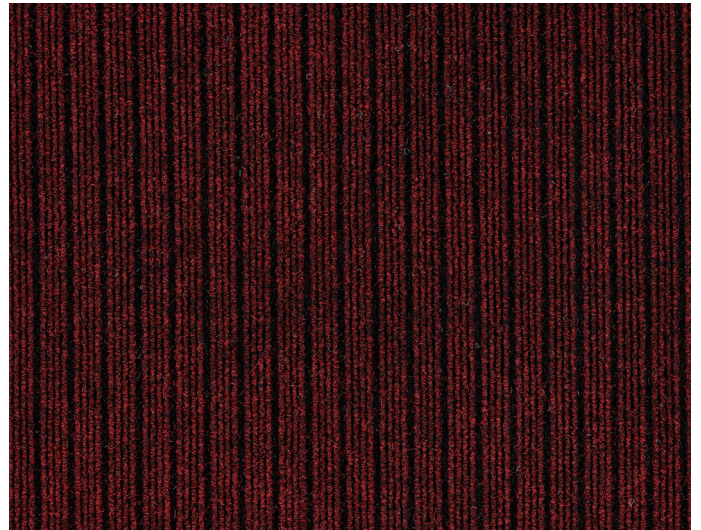
1861
Beige
1 m - 2 m - 4 m



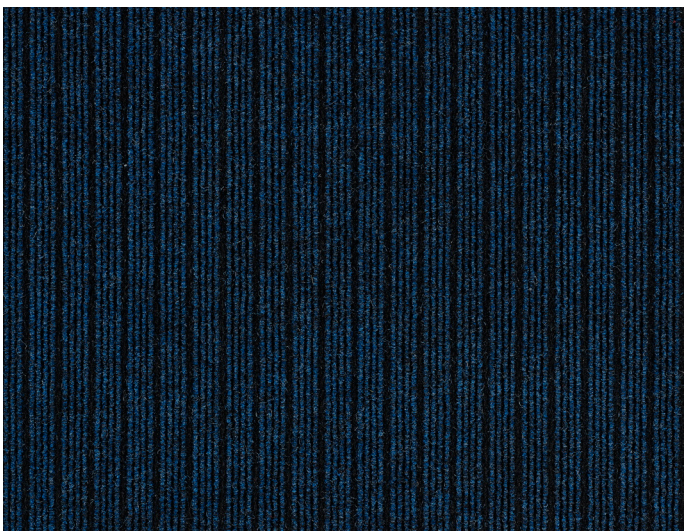
2862
Lichtgrijs
1 m - 2 m - 4 m



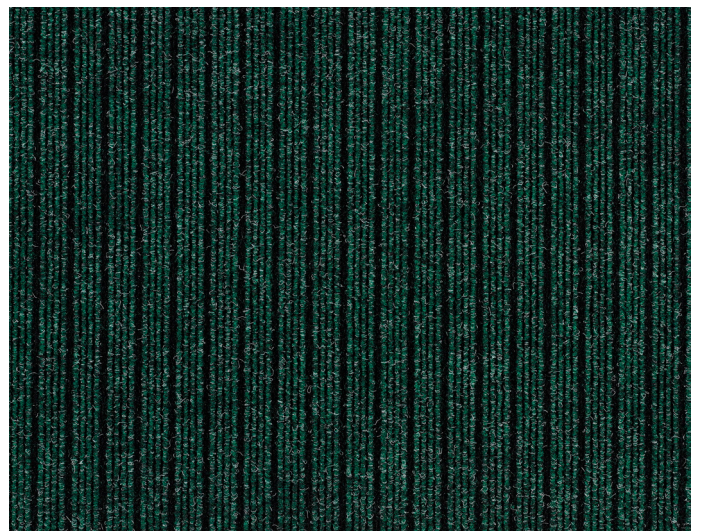
2868
Antracite
1 m - 2 m - 4 m



3879
Rood
1 m - 2 m - 4 m



5880
Blauw
1 m - 2 m - 4 m



6883
Groen
1 m - 2 m - 4 m